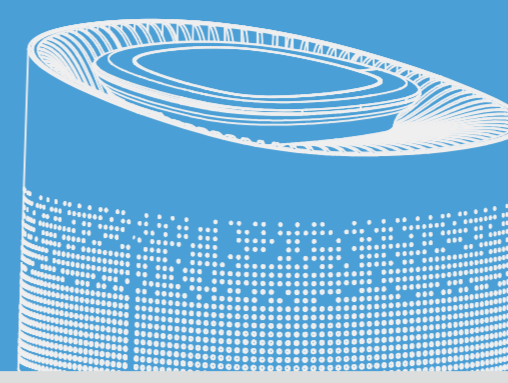


# INSTRUCTION MANUAL



**AIR PURIFIER**  
Neo  
Model No.: OSAP01

Thank you very much for using our products. Please read the user manual carefully before use, and keep it for future reference.

v0

## CONTENT

- Points for Attention ..... 01
- Product Overview ..... 03
- Specifications ..... 05
- Remove Filter Package ..... 06
- Function Instruction ..... 07
- Maintenance ..... 12
- FAQ ..... 13

## POINTS FOR ATTENTION

Before using, please read this user manual carefully and keep it for future reference.

### Warning

- To avoid electric shock and fire, do not allow water, liquid or any flammable detergent to get into or to clean the product.
- Do not spray any flammable materials such as pesticides or perfumes around the product.
- Before connecting the power supply, please check whether the voltage of the product is consistent with the local power supply voltage.
- If power cord is damaged, in order to avoid danger, it must be replaced by professional staffs.
- Please stop using if the plug, power cord or product is damaged.
- Keep the air inlet/outlet free from being blocked.
- Person with physical or mental disability, or without relevant experiences and skills (including children) should use it under guiding and instructing.
- This product can not replace normal ventilation, daily dust collection or oil pumping when cooking.
- Ensure the product socket is well connected with plug. If not, the plug will be hot.
- Do not place any items above the product.

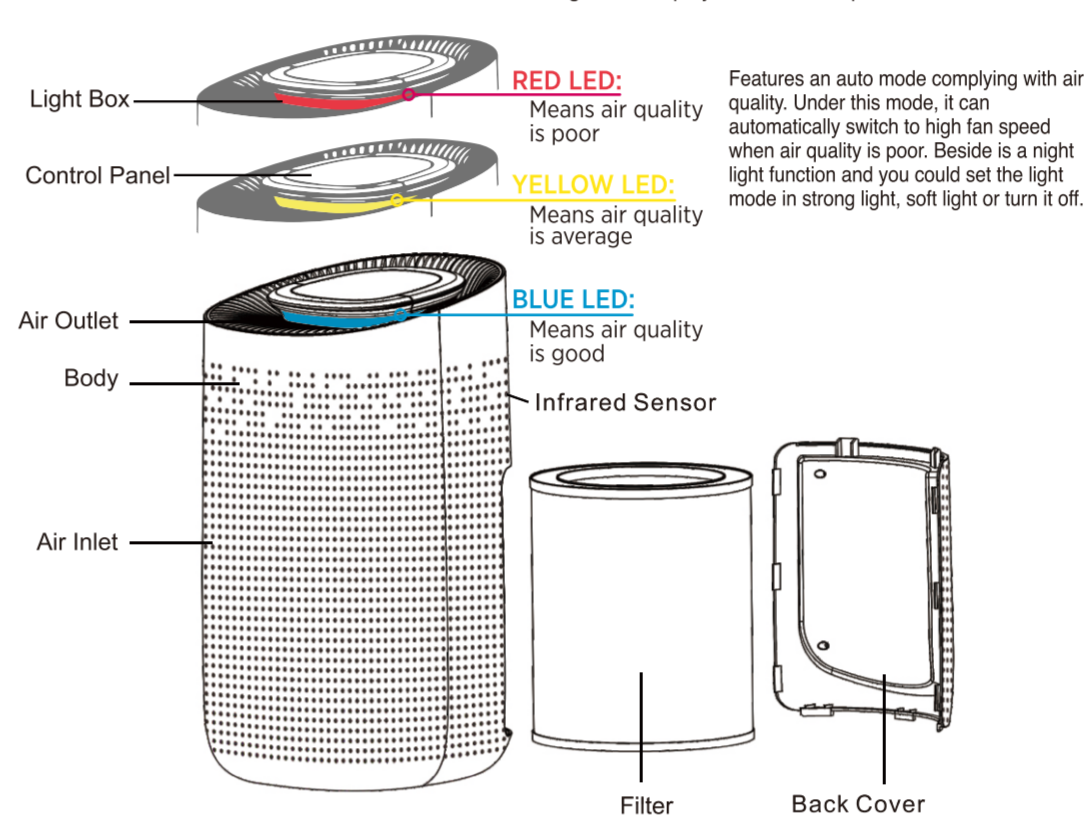
01

- Be sure to place and use the product on a firm, flat and horizontal surface.
- Leave at least 30cm of space on the back and sides of the product, and at least 50cm of space above the product when using.
- Do not place the product under air conditioner to prevent condensation water dropping into the product.
- Ensure both the filter and the back cover are properly installed before connected power.
- Please use the filter specially designed for this product.
- Do not take the filter as fuel or similar purposes to avoid irreversible harm.
- Do not use hard objects to strike the products, especially the air outlet and air inlet.
- Do not insert finger or other things into the air outlet/inlet to prevent physical damage or trouble.
- Do not use this product when you are using an indoor spray repellent, or in a place filled with grease, flammable gas or chemical fumes.
- Ensure the product is unplugged before moving, cleaning, maintaining and replacing filter.

02

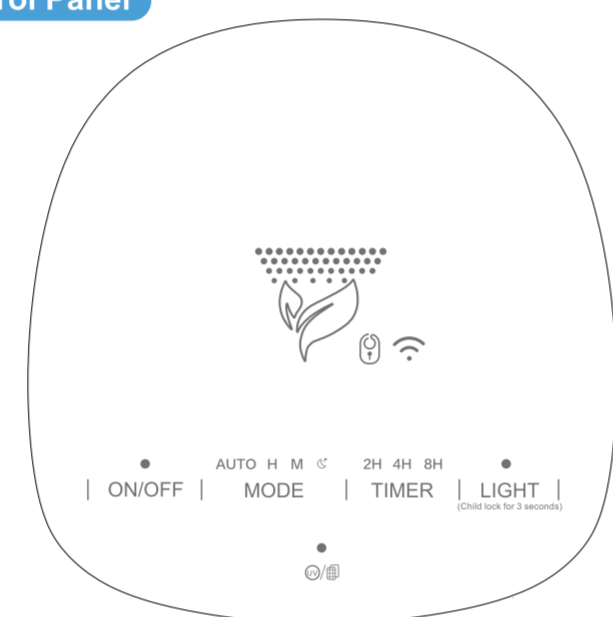
## PRODUCT OVERVIEW

### Components



03

## Control Panel



- ON/OFF**  
Power Button
- MODE**  
Wind Speed Button
- TIMER**  
Timer/WIFI Button
- LIGHT**  
Light/Child lock Button
- UV/Filter**  
UV/Filter Button

04

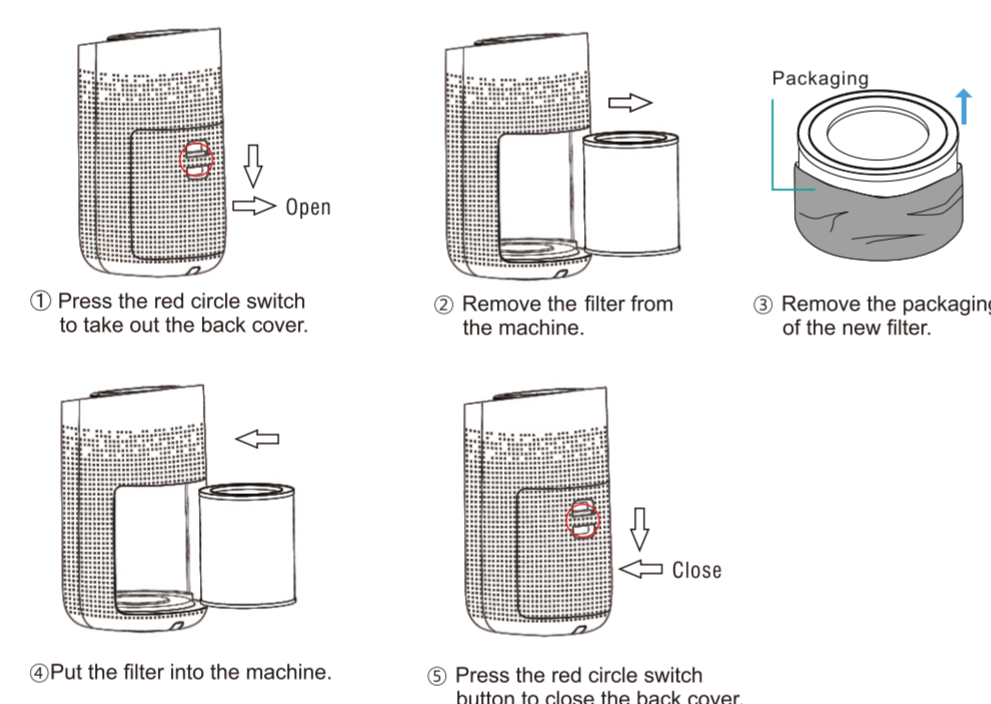
## SPECIFICATIONS

Model No.	OSAP01
Size	L270* W303* H497 mm
Input	AC100-240V 50/60Hz
Power	50W
Noise	≤56dB
Coverage area	<50m <sup>2</sup>
Weight	4.6KG

05

## REMOVE FILTER PACKAGE

Before using, please remove the package of the filter. Ensure the machine is unplugged before removing or installing the filter.



06

## FUNCTION INSTRUCTION

Connect the power, all indicators will be on for 1s and then off. After that, the machine will be in standby mode.

### Button Operation

- Power Button**
  - Press the power button, the machine turns on at mid default mode, meanwhile, the buzzer rings for one time and the indicator will be on.
  - Press again to turn off the machine, all the lights will be off, then the machine is in standby mode.

### Wind Speed Button

In the condition of working, press the Wind Speed Button to adjust the wind speed among the circulation of Auto-H-M-S grade, meanwhile, the buzzer rings for one time and the indicator will be on.

Auto: The air purifier will change the wind speed basing on the environmental air quality.

H: High speed wind

M: Middle speed wind

S: Sleep mode, LED lights will be off when sleep mode on

### Timer / WIFI Button

In the condition of working, press the Timer Button to set timer among the circulation of 2H, 4H and 8H. Every time you press the button, the buzzer rings for one time, and the indicator will be on.

(Notice: Long press the Timer/WIFI Button for 3 seconds to start WIFI function, and the indicator will be on. If you turn off the machine, the WIFI function need to be reset when you turn on again.)

07

### Light / Child lock Button

In the condition of working, press the Light Button, the indicator will be on. Every time you press it, the buzzer will ring for one time, and the light will be changed among Soft - Standard - Off mode.

(Notice: In the condition of shutdown, the light adjustment can't be operated. During the first 30s preheating period, the Light Button just could be operated between on and off mode.)

In the condition of working, press the Light/Child lock button for 3s to start the Child lock function, the indicator will be on. Press again for 3s, the buzzer will ring for one time then the indicator will be off to unlock this function.

(Note: Any functions cannot operated in the mode of Child lock function unless you long press this button to unlock it.)

### UV/Filter Button

① In the condition of working, press the UV Button to start UV function, the indicator will be on. Press again to turn off this function, the buzzer will ring for one time when you press it every time.

### Reminder of Replacing Filter

② In the condition of working, when the machine detects the filter is saturated after running for 2200 hours, the filter indicator light will keep flashing in red. Long press the Filter Button for 7s to stop flashing light and to reset after installing a new filter.

(Notice: The machine still works normally even in the reminder of replacing filter.)

08

## Works With Smart Life APP

### Download & Registration

① Scan the QR code to download "Smart Life" APP. You can also search "Smart Life" in either APP store or Google Play to install the APP.



② Open the "Smart Life" APP, tap "Register" to register a "Smart Life" account with your phone number or E-mail. Then sign in the APP.

③ Open the "Smart Life" APP, click "add device" or tap "+" on the top right corner of the APP homepage. There are two methods to enter the page of "add device": Add WiFi manually or search for the devices automatically.

In the homepage of add device manually, choosing any one of product rang to enter a new homepage and ensure the indicator light flash quickly.

The devices provide two configuration methods. In the homepage of Easy mode, tap "Other methods" on the top right corner to enter Easy mode and AP mode, then could choose one of mode to connect with WiFi.

### Configure Amazon Echo

Open Alexa App, click Alexa

Click on bottom right corner for Devices

Click Add Device

Click on type of device

Click on "Tuya"

Click on Discover Devices

Wait to find device

Verify correct device is selected

### Control Smart Life devices with Alexa voice control phrase:

Explanation: First, say "Alexa" to wake device, you will see the blue LED light lighten up around Alexa. You may use "turn on" to open some device. Use "turn off" to close some device. And lastly, you should say the name of the device you want to control. Try out these phrases: (Device Name) should be the name of your device;

Take light bulb as an example by the name of "light" (Device Name)

1) ON: "Alexa, turn on light (Device Name)"  
2) OFF: "Alexa, turn off light (Device Name)"

3) Dimming: "Alexa, set light (Device Name) to 80 percent"  
4) Color changing: "Alexa, dim light (Device Name) to 50 percent"  
"Alexa, dim light (Device Name) to 100 percent"  
"Alexa, set light (Device Name) to blue"

09

## Configure Google Home Device:

Make sure your Google Home device is powered on and connected to a Wi-Fi network. Open the Google Home app on your phone. After successful login, tap on the menu in the upper left corner and select "SET UP" to set up Google Home.

It will notify you with a sound to ensure that you are connected to correct device. After you hear the sound, tap "YES" to proceed to the next step.

You can choose to differentiate the room where Google Home is located from other Google devices. Then, select the Wi-Fi network and language, wait for the system to complete the configuration, and tap "next".

According to the page prompts, choose whether to agree to the corresponding operation. When the page displays "Google Home is ready," select "continue" to continue to the next step. Next is the voice control guide tutorial. Once you're done listening, tap "FINISH SET UP". At this point, Google Home setup is complete.

### Key step - Link Action

On the main page of the Google Home app, tap the sidebar menu in the top left corner and select "Home Control".

Then tap the plus sign in the lower right corner and search for "Smart Life". Find Smart Life on the list and open it, select the country where your Smart Life app account is located, enter your Smart Life app account and password, and tap "Link Now".

Enter the Smart Life app account and password, then tap "Link Now" to link your Smart Life account. Choose the room where your device is located, and then the skill will appear on the home Control Devices list. Now you can begin your smart home journey.

### Control Smart Life device with Google Home:

Now you can control your smart device with Google Home. With the bedroom light as an example, the supported commands include (Google Home currently only supports English commands)

- Ok Google, turn on/off bedroom light. (Turn on/off the light or other device)
- Ok Google, set bedroom light to 50 percent. (Set the light to any brightness)
- Ok Google, brighten bedroom light. (Brighten the light)
- Ok Google, set bedroom light to red. (Set the color of the light, only color changing lights support this function)

10

## Add Devices in Easy Mode(Recommend)

Make sure your smart device is energized and your mobile phone is connected to your WiFi network. If the WiFi indicator of smart device do not flash, please press the WiFi button for more than 7 seconds until the indicator light keeps flashing quickly, it means the devices is ready for configuration.

Tap "+" on the top right corner of the APP, select type of service device and click it. When appearing "Add 1 device successfully", it means the connection is completed and your device will be listed in your APP list.

### Add Devices in AP Mode

① If failed in Easy Mode, users could also add devices in AP Mode.

② Press the WiFi button for more than 7 seconds until the WiFi indicator light begin to flash slowly, it means the device is already for configuration in the AP Mode.

③ Tap "+" on the top right corner of the APP. Select AP mode and tap it. Then tap "Ensure the indicator flash slowly". Then tap "Connect now" to go to the WLAN Settings interface in your mobile phone and select the WiFi network named "Smart Life\_XXXX" to connect it.

④ Return to the "Smart Life" APP, the connection will start automatically.

⑤ When appears "Add 1 device successfully", it means the connection is completed and your device will be listed in your APP list.

Now you can control your smart device via your mobile phone APP anytime and anywhere (Make sure your smart device and smart device are all connected to the network, and to change the router name into Smart Life XXX).

11

## MAINTENANCE

### Notice:

- Ensure the machine is unplugged before maintenance.
- Do not immerse the air purifier into water or any liquid.
- Do not use abrasive, corrosive or flammable cleansers (such as bleach or alcohol) to clean any part of the unit.
- Clean the filter regularly. Do not wash or reuse the filter.
- Ensure the machine is unplugged before replacing the filter.
- Please sterilize the filter under sunlight regularly.
- Do not use a vacuum cleaner to clean the filter or wash it directly.

### Cleaning & Storage

- Ensure the machine is power-off and unplugged.
- Take out the filter to clean any dust from the surface of it.
- Use a soft cloth with neutral cleanser to clean away any dust or debris from the surface of the machine.
- After the filter is dried, install it into the air purifier to restart.
- If you do not use the machine for a long time, ensure the machine is dry out, put on the dust cover bag and place it in a cool and well-ventilated place.
- To ensure a good performance of the machine, please turn on the machine for a few minutes from time to time.

Notice: Please don't drop any water into the machine when clean the air outlet.

12

## FAQ

SITUATION	REASON
No working	<ul style="list-style-type: none"> <li>Is it plugged into a power socket? Is there a power outage?</li> <li>Is the home leakage switch or fuse cut off?</li> <li>Is the filter replacing indicator keep flashing?</li> </ul>
Poor performance	<ul style="list-style-type: none"> <li>Is there any dust in the surface of primary filter?</li> <li>Is there any obstacle blocking the air inlet/outlet.</li> </ul>
Significant noise	<ul style="list-style-type: none"> <li>Is there anything stuck on the fan in the air outlet?</li> <li>Is the machine filled?</li> <li>Please set a lower grade of wind speed if the noise is too loud, or set low grade of wind speed when using in bedroom at night.</li> </ul>
Coming out nasty smell	<ul style="list-style-type: none"> <li>It is the normal phenomenon that the machine emits the smell of plastic for the first time. The machine will emit nasty smell if the filter is dusty, in this case, please clean or replace the filter.</li> <li>If the burning smell emits from the machine, please unplug the power socket and contact with buyer or customer service.</li> </ul>
The reminder of replacing filter is still flashing after user replaced a new one.	<ul style="list-style-type: none"> <li>Please press the Filter button ⑤ for 7s to reset the machine and the life counter of the filter will start.</li> </ul>

Notice: If the above FAQ can not solve your problems and need maintenance, please contact the supplier or after sales service center. Please do not disassemble the machine to maintain by yourself.

13